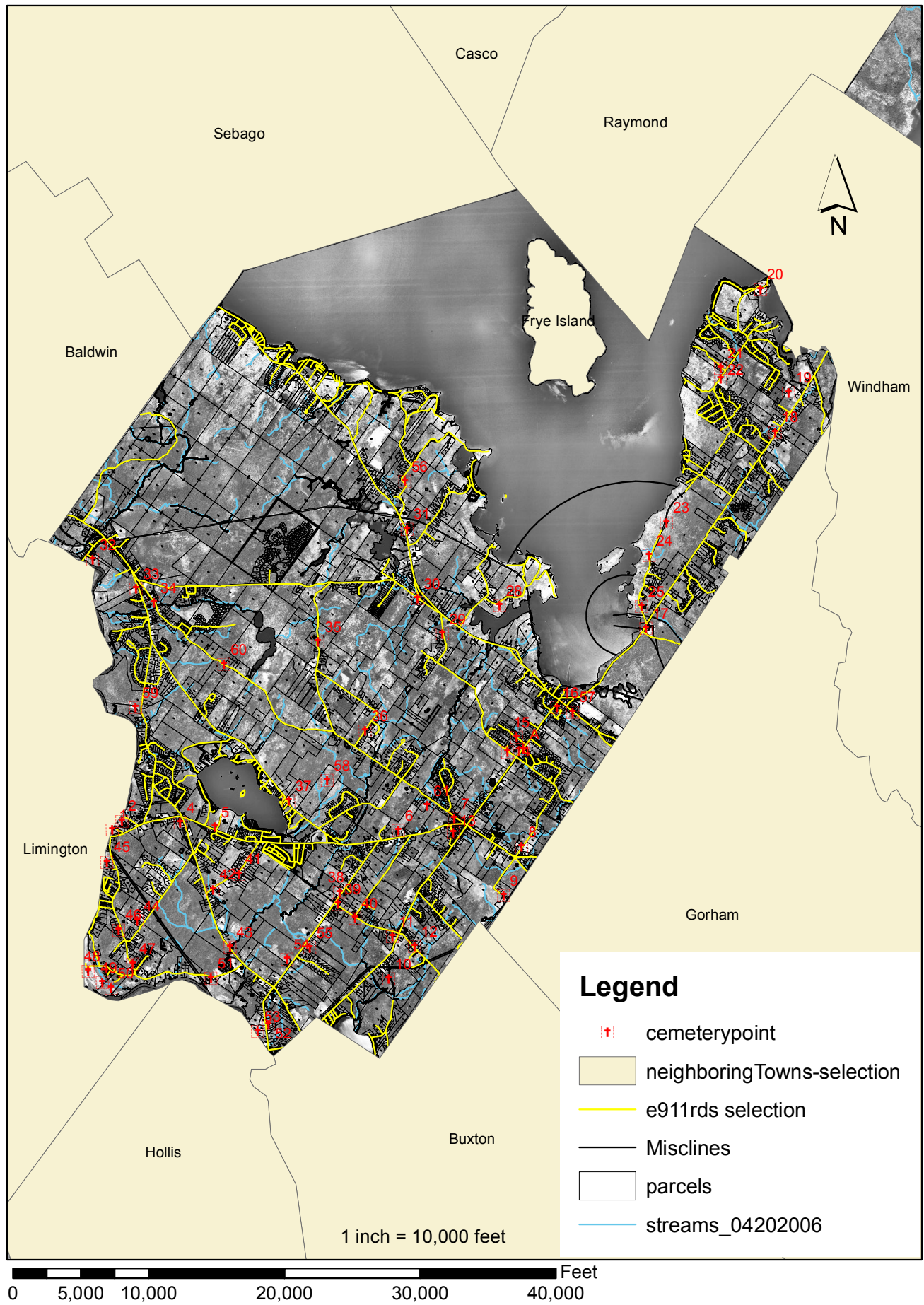


# Cemeteries in Standish, ME



Standish, ME Cemetery Locations directions  
Updated 1/30/2005 by Kenn Brooks

NO	NAME	DIRECTIONS	LAT-LON
A	Tom Shaw Tomb	Corner of Northeast Rd. (Rt. 35) and Brookside Drive.	43° 44.923N, 70° 32.656W
B	Old Shaw Cemetery	Shaw's Mill Rd.,in Gorham, 0.1 M on left after town line	43°44.108N, 70° 31.642W
1	McLellan, Ebenezer	Ossipee Trl W(Rt.25)across from River Rd., out in a field.	43° 43.973N, 70° 39.549W
2	Weeman, Obadiah	Weeman Rd., go to last house, to left and beyond barn, looking towards McLellan Cemetery	43° 44.089N, 70°39.385W
3	Baldwin Road	Destroyed.	
4	Higgins - Elwell	25 Saco Rd., 0.1 M off Ossipee Trl W (Rt. 25) on R after field. Behind Stiles Transmission follow short path into woods	43° 44.056N, 70° 38.405W
5	Chick	Off Ossipee Trl W (Rt. 25) - 150 ft from Kiwanis Beach Rd. on right, Pole 112, short path into woods	43° 44.018 N, 70° 37.851W
6	Thorne, Albert	Ossipee Trl W (Rt. 25), Thorne's Hill, behind Standish Baptist Academy, to left of the athletic field	43° 43.956N,70° 34.753W
7	Standish Corner	Oak Hill Rd. , on left across from UCC Parsonage.	43° 44.227N , 70° 33.280W
8	Shaw, Eli & Josiah	Blake Rd. by Wells Unlimited	43° 43.863N, 70° 32.152W
9	Lowell, Daniel	Ossipee Trail East (Rt. 25) to Randall Rd. , beyond Randall residence on right	43° 43.279N, 70° 32.461W
10	Waterhouse, Theophilus	470 Bonny Eagle Rd. (Rt. 35) / down the Old Standish Rd.,on right behind Metcalf-Mosley mill.	43° 42.185N, 70° 34.928W
11	Moore, Hugh Capt.	Bonny Eagle Rd. (Rt. 35) 0.1 M beyond Dow Rd., on right behind Al Wormwood's house, to right of backyard	43° 42.653N, 70° 34.864W
12	Paine, Peter	Chicopee Rd., 0.3 M on left from Bonny Eagle Rd	43° 42.539N, 70° 34.511W
13	Dennett, Louisa	Crypt at top of Village View d. on left	43° 43.912N, 70°33.837W
14	Mussey, Benjamin	0.1 M from Northeast.Rd. (Rt. 35) on Moody Rd. , beyond Sylvania on left. Surrounded by stone wall. RFG	43° 46.028N, 70° 32.381W
15	Butterfield, Jesse	Otter Creek Dr., 0.2 M on right.	43° 45.190N, 70° 32.223W
16	Poor - Birch	Northeast Rd. (Rt. 35) / Sebago Lake Village, on right by brook, ROW to cemetery	43° 45.558N, 70° 31.549W.
17	Chadbourne	Junction Chadbourne Rd. (Rt. .35) & White Rock Rd . (Rt. 237)on knoll in front of PWD' new plant	43° 46.494N, 70° 30.040W
18	Harding	Chadbourne Rd. (Rt. 35) / after White's Bridge Rd., 0.4 M on Chadbourne Rd. (Rt. 35) f after White's Bridge Rd., 0.4 M on left. Chain link fence. RFG	43° 45.276N, 70° 27.858W
19	Wescoat, Eliakim	Rt. 35, after Harding Cemetery, 0.6 M on left, across sand pit, up hill across field around corner to gate in woods (#4 on Pond Rd. between White's Bridge Rd. and Canal	43° 49.344N, 70° 27.597W
20	White, Peter	White's Bridge Rd . on right by back gate of Richardson's Marina.	43° 50.609N, 70° 28.097W
21	Shaw, Leonard	St. Joseph's College on Westerlea Way on left before new dormitory, one list has note (1 stone no name, same road) .	43° 49.655N, 70° 28.765W
22	Blake, Ithiel	White's Bridge Rd., across from St. Joseph's College ent.rance(stonewalls with no gateway).	43° 49.531N, 70° 28.771W
23	Lombard, Jedediah	(#3 on Pond Rd.) Thomas Rd. left on Pond Rd. to PWD gate, walk approx. 0.3 M on left.	43° 48.092N, 70° 29.461W
24	Cummings - Smith	(#2 on Pond Rd.) from Chadbourne Rd. (Rt. 35) end, go to PWD gate, walk in 0.1 M, on left	43° 47.349N, 70° 29.979W
25	Harmon Waterhouse	(#1 on Pond Rd.) from White Rock Rd. (Rt. 237) end, go 0.3 M on right	43° 46.779N, 70° 30 .135W
26	Moulton	Richville Rd. (Rt. 114),between upper end of Musselman Rd and Elenwood Rd. (believed to have been moved by State Highway to Sebago Lake Cemetery) .	
27	Hall, Naomi	Richville Rd. (Rt. 114), on right at Sticky River, on PWD land.	43° 46.354N, 70° 32.968W ?
28	Littlefield, Almon	Smith's Mills Rd. , after you go by Littlefield Rd., go 0.1 M to dirt road on right, down that rd. 0.1 M on left before Hornpout Rock.	43° 46.787N, 70° 32.510W
29	Rich, Lemuel & Israel	Harmon's Hill Rd. off Richville Rd. (Rt. 114), 0.5 M on right up on knoll.	43° 46.372N, 70° 33.432W
30	Hamlin	Boundary Rd. from Richville Rd. (Rt. 114)/ past the beginning of the Moseley Rd.	43° 46.764N, 70° 34.428W
31	Friendship	Richville Rd. (Rt. 114) on right between Harmon's Beach Rd. & RR tracks. FR Gate	43° 47.593N, 70° 34.606W



# Standish, ME Cemetery Locations directions

## Updated 1/30/2005 by Kenn Brooks

32 Lord, Tobias	Main Street (Rt. 11) ' Steep Falls to Heath Lane, to backright of last house	43° 47.271N, 70° 39.859W
32B Cousins - 2 Dau.	Right behind Tobias Lord (probably servants	43° 47.271N, 70° 39.859W
33 Steep Falls Village	Two Trails to Pequawket Trail (Rt. 113), on left before Boundary Rd.	43° 47.025N, 70° 38.555W
34 Strout - White	Middle Rd., on right before brook, across from sandpit, up on hill	43° 46.744N, 70° 38.835W
35 Rand, Nathaniel	Oak Hill Rd. , on right beyond the last old cape before Boundary Rd.	43° 46.344N, 70° 35.541W
36 Oak Hill Cemetery	Dolloff Rd. , 0.3 M on right. LFG 43° 45.287N, 70° 34.761W. RFG	43° 45.272N, 70° 34.773W
37 Paine Neighborhood	Pequawket Trail (Rt. 113), 0.8 M on right from Two Trails.	43° 44.303N, 70° 36.599W
38 Dow's Corner	Cape Rd., 1 M from Rt. 25 on right.	43° 43.315N, 70° 35.180W
39 Pierce - Dow	Dow Rd., 0.1 M from Cape Rd.	43° 43.057N, 70° 35.783W
40 Stevens, Lorenzo	Dow Rd., on right towards Rt. 35, about half way across, across from Cliff Marean's.	43° 42.897N, 70° 35.495W
41 Thomes, Thomas & Charles	22 Deer Hill North, off Rt. 25, 0.5 M on left.	43° 43.427N, 70° 37.420W
42 Skillings, Elizabeth	Deer Hill South, 0.1 M on right from Saco Rd., on right by barn near stonewall.	43° 43.250N, 70° 37.865W
43 Norton, James Dr.	South Standish, take Saco Rd, go by River Rd., cross Jose's Brook, large stone on right.	43° 42.542N, 70° 37.596W
44 Berry, Richard	245 Milt Brown Rd., 0.4 M off River Rd., on left in backyard.	43° 42.898N, 70° 39.115W
45 Burnham, Joe & John	65 River Rd., 0.4 M from Rt. 25, on right, down behind barn, take path on right	43° 43.600N, 70° 39.628W
46 Foss - Twombly	281 River Rd., on right from Rt. 25 (Top of York's Hill) . CTR	43° 42.765N, 70° 39.443W
47 Moses	402 River Rd., 1.8 M from Saco Rd., on right.	43° 42.354N, 70° 39.233W
48 Dresser, George	Varney Rd., past last house, in field on left, in clump of trees.	43° 42.267N, 70° 39.971W
49 York, Isaac	Varney Rd., go to the big field on left, stop immediately, it's way down in that field before the distant fence.	43° 42.130N, 70° 39.734W
50 York, Bela	Off the end of Fowler Rd. behind the Wyman Farm, way down in field overlooking the Saco River	43° 42.056N, 70° 39.591W
51 Boulter, Amos	River Rd., 0.5 M from Saco Rd., on left up on a knoll	43° 42.147N, 70° 37.906W
52 Maplewood	Cape Rd., 0.4 M on right from Rt. 35 Twin Bridges	43° 41.599N, 70° 36.989W
53 Robinson, Capt. Increase	691 Cape Rd., 0.2 M from Rt. 35, down back on CMP land	43° 41.525N, 70° 37.136W
54 Davis, Noah	Cape Rd., [2.1 M from Ossipee Trail West (Rt. 25)] 1 just beyond Chelise Dr., opposite side of road - behind Cape Cod in cow pasture.	43° 42.399N, 70° 36.633W
55 Thomes, Amos	376 Cape Rd. [1.8 M from Ossipee Trail West (Rt. 25)] behind barn in field	43° 42.543N, 70° 36.256W
56 Cole's Hill	Cole's Hill Rd., on right by pole #14. No stones. Iron pipe fence	43° 48.306N, 70° 34.072W
57 Sebago Lake Village	Fort Hill Rd. (Rt. 114) in front of Edna Libby School	43° 45.506N, 70° 31.277W
58 Nason, Emma	Between Pequawket Trail (Rt. 113) and Middle Rd. (1 stone in Alley Field) now woods.	43° 44.618N, 70° 35.984W
59 Manchester Farm	On Manchester Rd., 1 M on right from (Rt.113) or 1.7 M on left from Ossipee trl (Rt. 25)' down driveway, past house & barn, short way on left.	43° 45.462N, 70° 39.166W
60 Child	Middle Rd. . No gravestone.	43° 45.962N, 70° 37.621W
61 Smith, Mamie	Oak Hill Road, 0.5 M on left after Seavey's store	43° 44.372N, 70° 33.699W
62 Sanborn, Miriam	121 Blake Rd., follow stone wall on right, down to a point parallel to the back corner of the house	43° 44.101N, 70° 31.820W