

Catherine's Cupboard Food Pantry



Serving friends and neighbors with
compassion!

Catherine's Cupboard Serves:

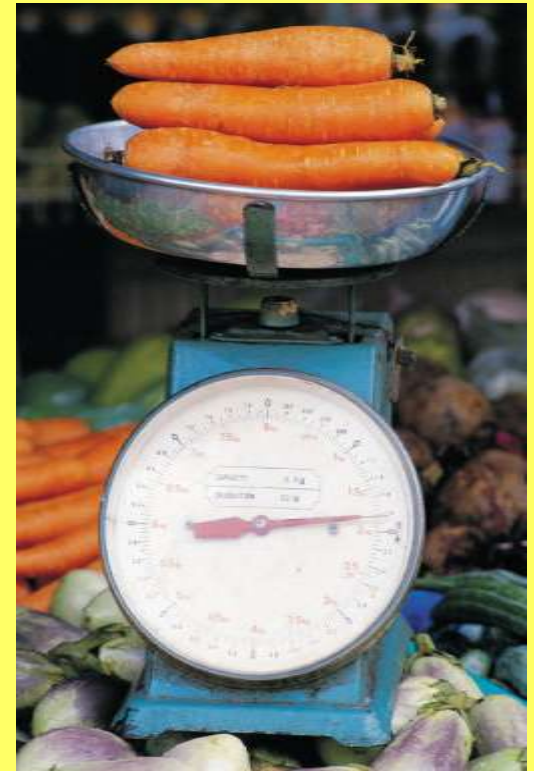
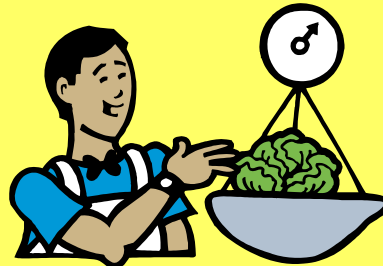
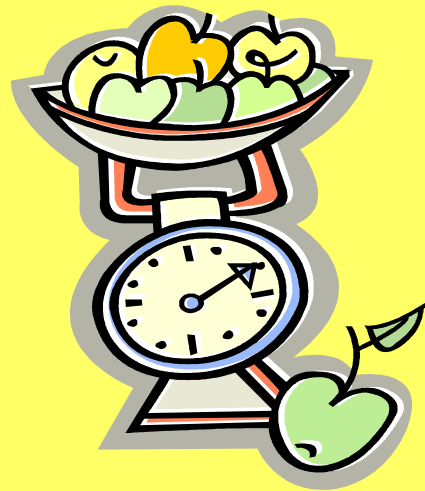
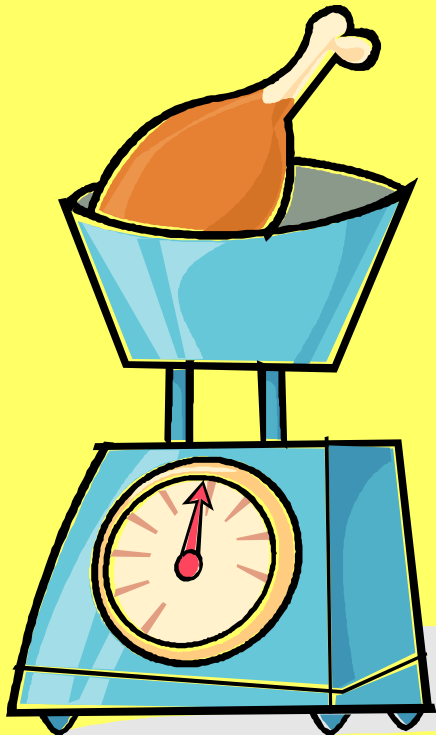
726 Men and Women

441 Children



Catherine's Cupboard distributed:

- Over 29,000 pounds of food in JUST 2010!



Catherine's Cupboard distributes:

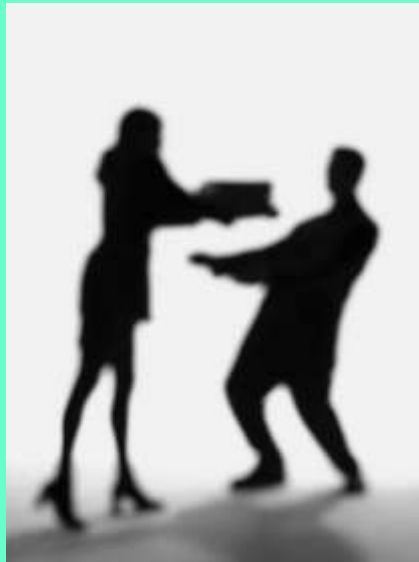
Peanut butter, rice, pasta, cereal, crackers, canned fruit, canned veggies, and canned meat. We also give out frozen meat, and bread when available.

Pearson's Town Farm, as well as, Rippling Waters Farm donates fresh, organic produce in season.

Also, food donated from Hannaford Supermarket is available! This is usually frozen meat, fresh produce, deli and bakery goods.

Donations needed:

We are always in need of canned fruits and canned veggies, canned meat; such as tuna, pasta, peanut butter, pasta sauce, cereal, and crackers. Every donation helps!



Catherine's Cupboard Opportunities:

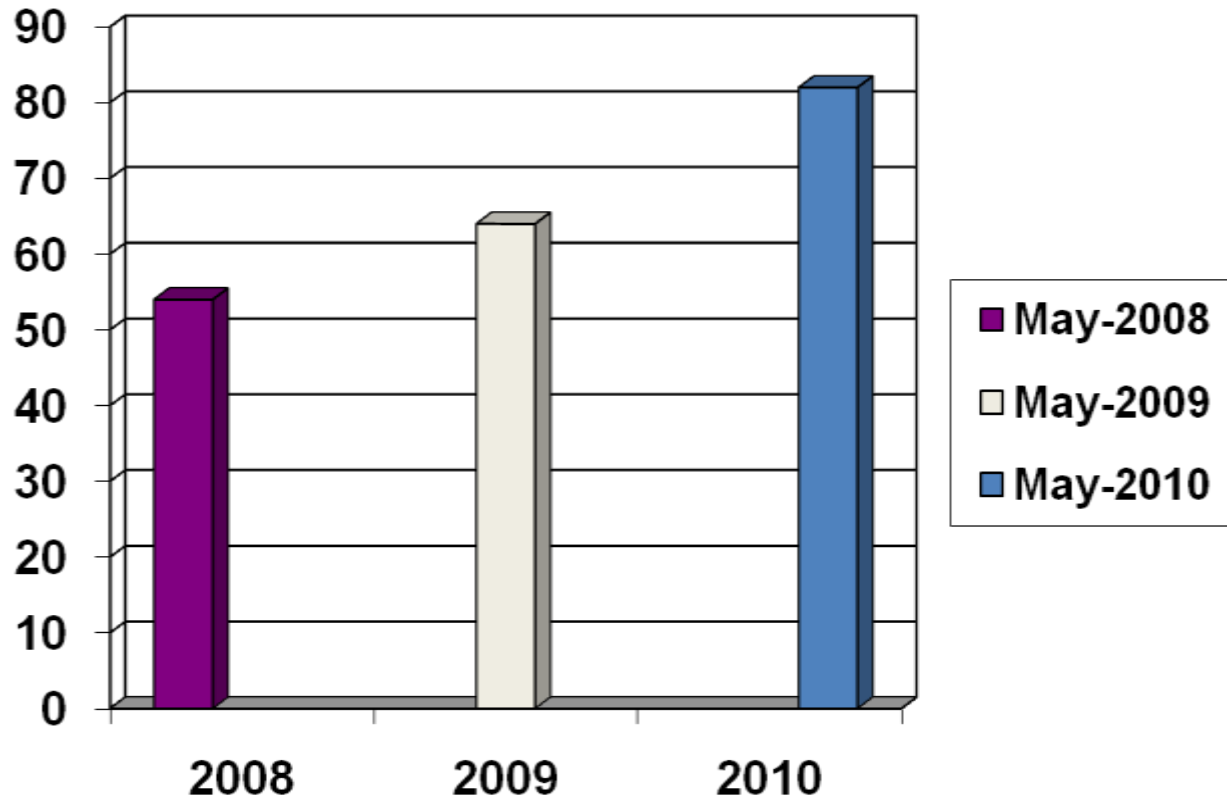
There are many opportunities for volunteering at the pantry! The pantry is open from 6-7pm *EVERY* Wednesday!

Volunteers are working to set up the pantry starting at 2pm! For anyone who needs a ride, Corey French will be waiting in the Heff lounge from 4:50-5:10, then he will drive the school van to the pantry.

For More Information contact:

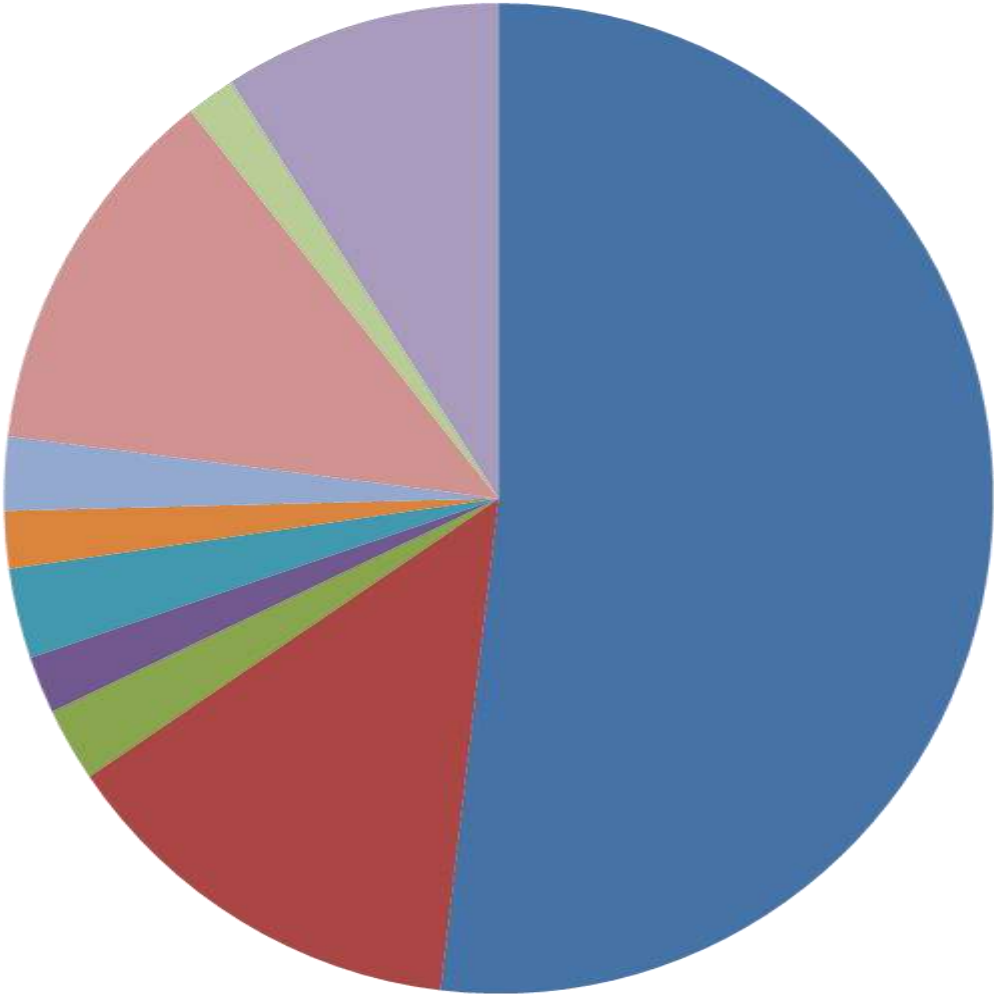
Amy Russell 893-7790

Pantry Usage May 2008-May 2010



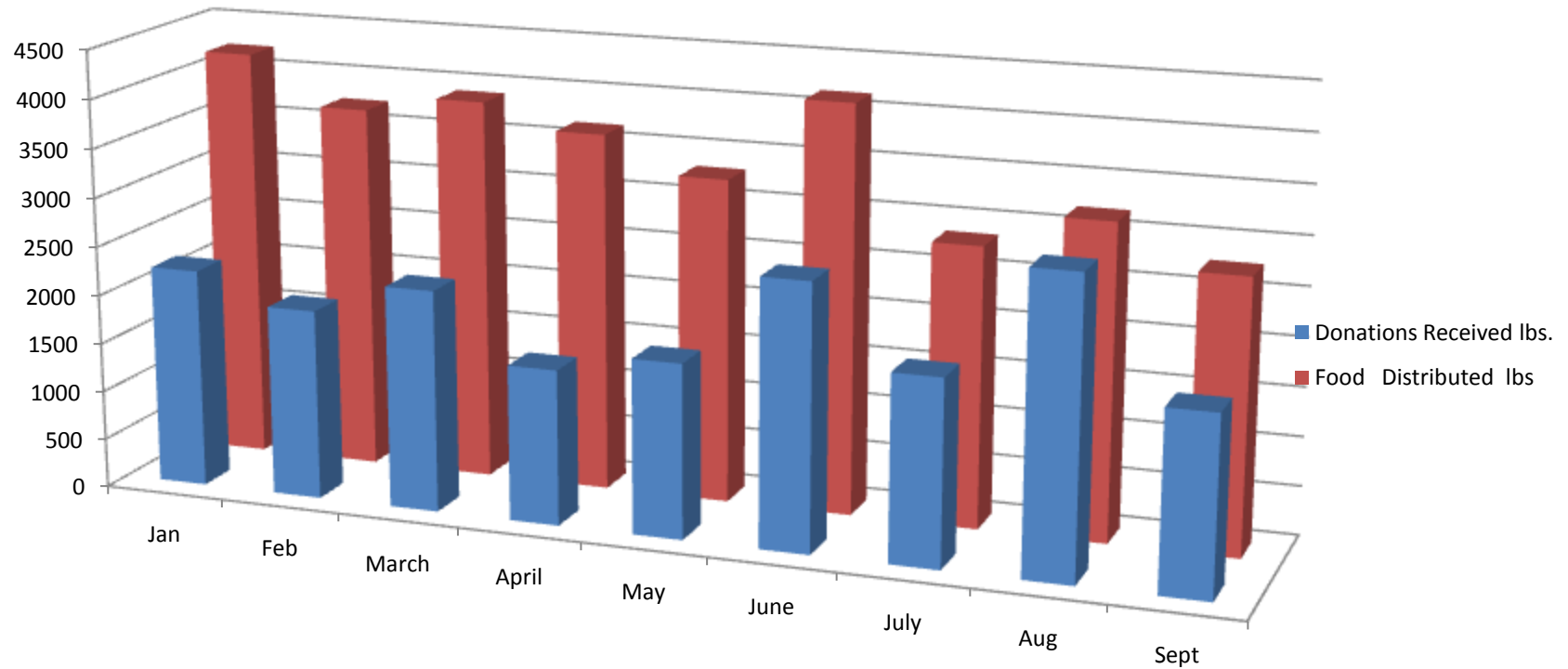
We have had a steady increase in clients visiting. This represents ONLY the May months for the past three years.

Where Our Patrons Live



- Standish
- Steep Falls
- Buxton
- Baldwin
- Cornish
- East Baldwin
- Gorham
- Limington
- Windham
- 16 other towns

This chart shows the food donated versus the food distributed so far in 2010



Thank you for helping our
neighbors and friends.

“How can we ever say ‘it’s enough’ while our
friends and neighbors go hungry?”

-Catherine McAuley