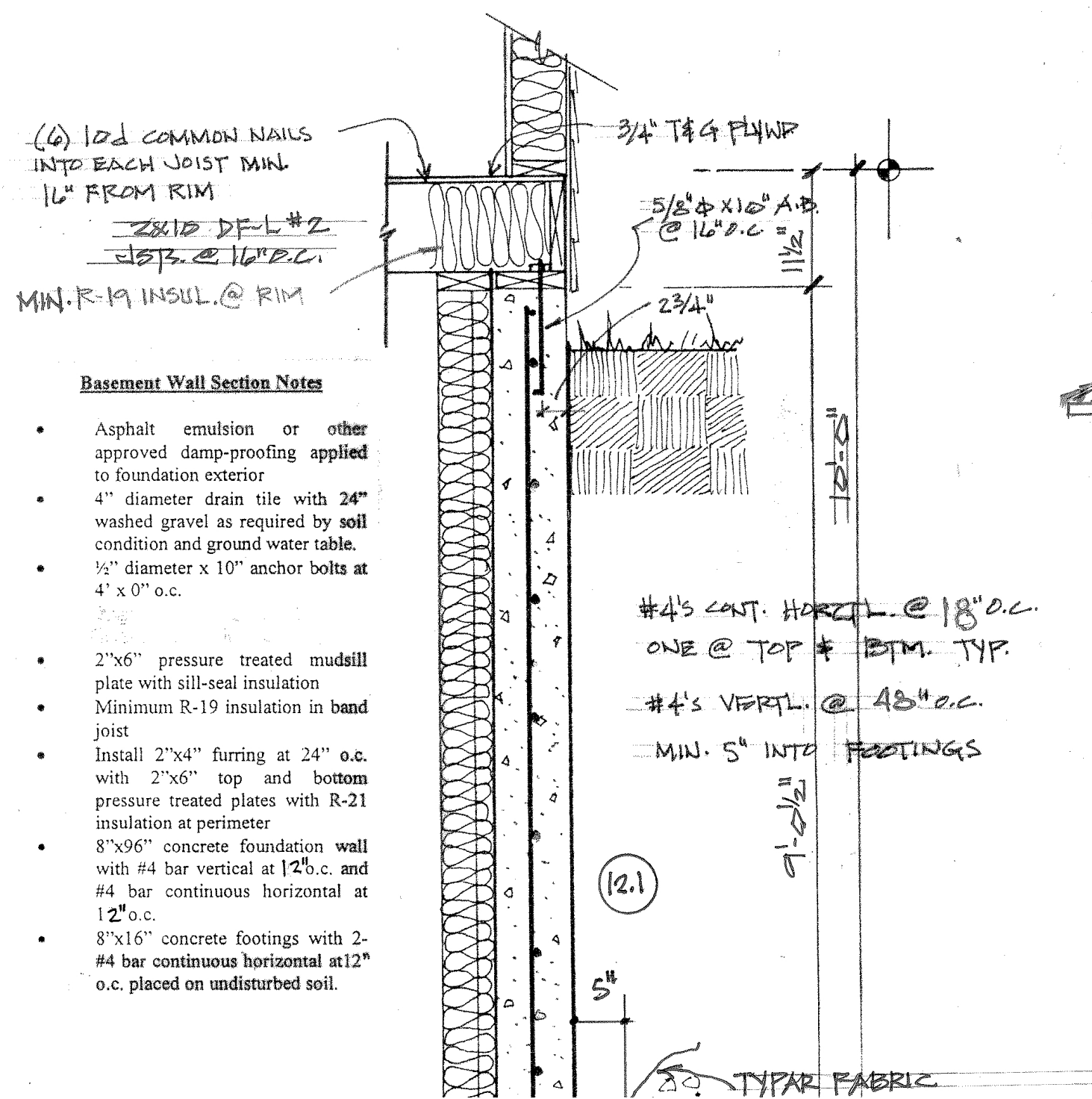
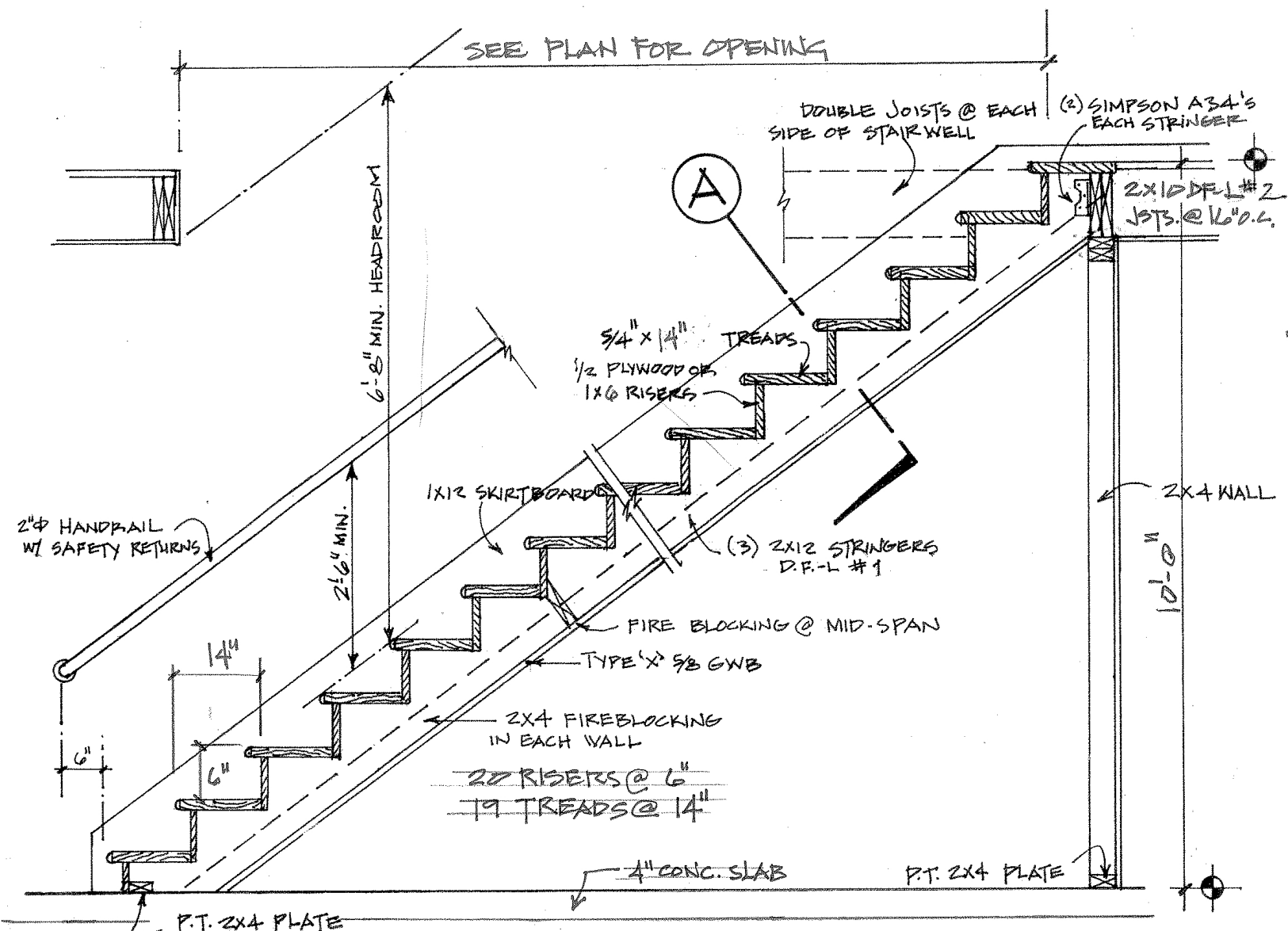
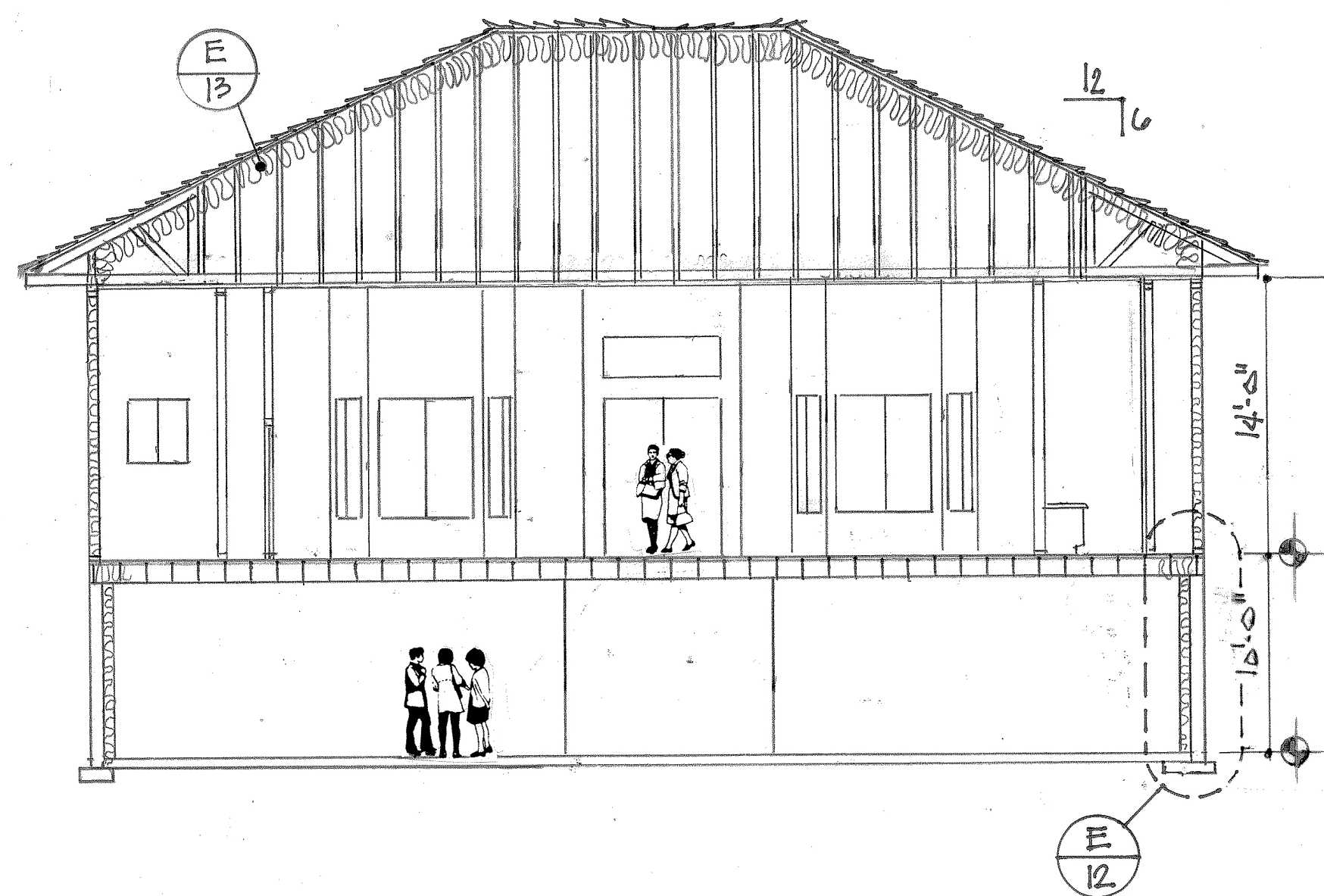


E 12 9 FT. BASEMENT WALL DETAIL Scale: 3/4" = 1'-0"

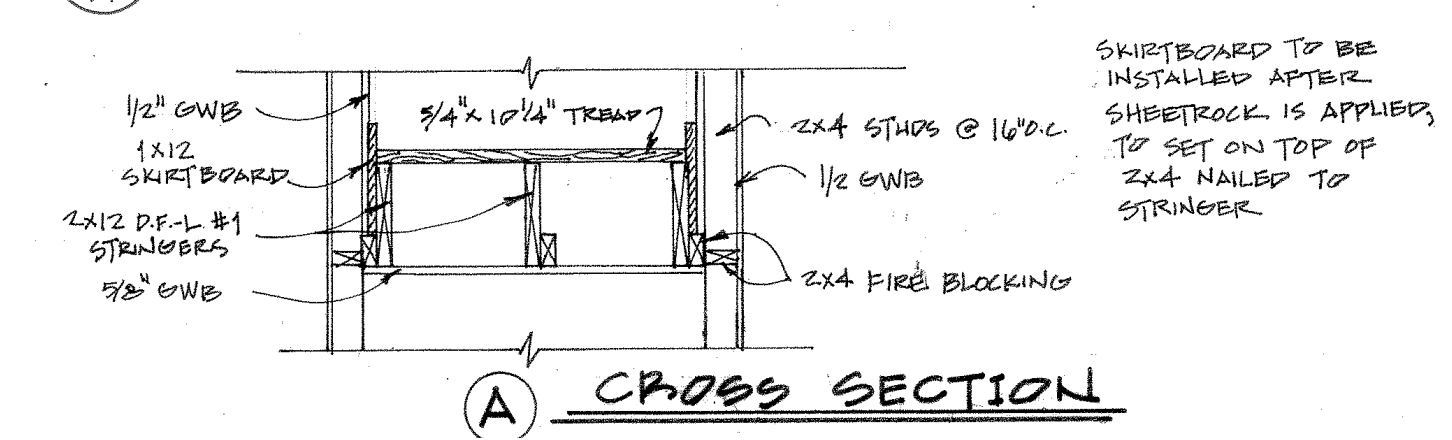
A 12 BUILDING SECTION Scale: 1/8" = 1'-0"



- Basement Wall Section Notes**
- Asphalt emulsion or other approved damp-proofing applied to foundation exterior
 - 4" diameter drain tile with 24" washed gravel as required by soil condition and ground water table.
 - 1/2" diameter x 10" anchor bolts at 4' x 0" o.c.
 - 2" x 6" pressure treated mudsill plate with sill-seal insulation
 - Minimum R-19 insulation in band joist
 - Install 2" x 4" furring at 24" o.c. with 2" x 6" top and bottom pressure treated plates with R-21 insulation at perimeter
 - 8" x 96" concrete foundation wall with #4 bar vertical at 12" o.c. and #4 bar continuous horizontal at 12" o.c.
 - 8" x 16" concrete footings with 2-#4 bar continuous horizontal at 12" o.c. placed on undisturbed soil.



C 12 STAIR SECTION SCALE: 1/2" = 1'-0"



CROSS SECTION EXAMPLE

This example is for demonstration purposes only. Please verify all specifics with the applicable building and land use codes.